

Scenario 4



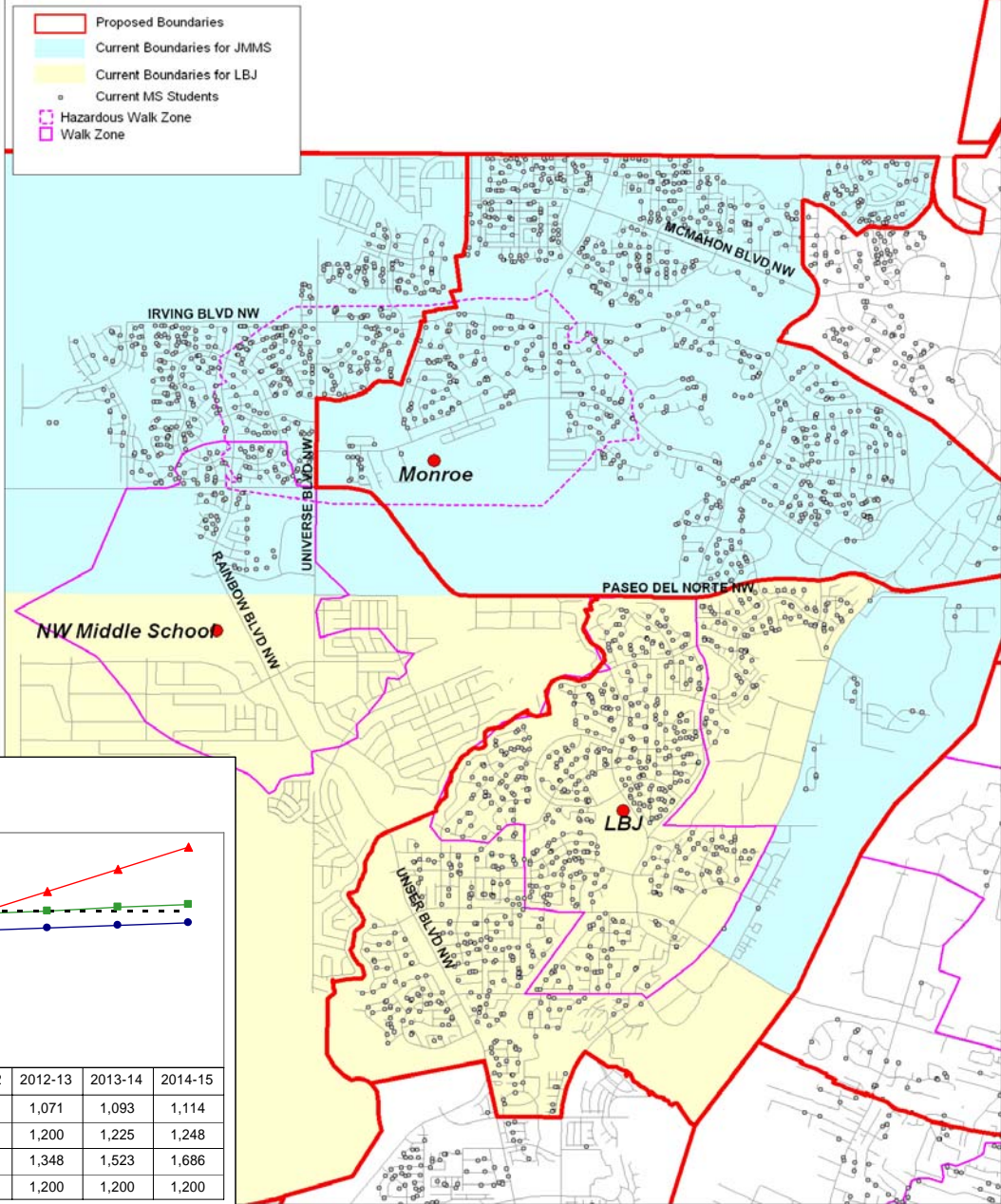
Pros

- Relief for JMMS
- Takes growth areas from LBJ and JMMS
- LBJ and JMMS will have viable boundaries for the long term
- Next new MS boundary will only impact the current new MS

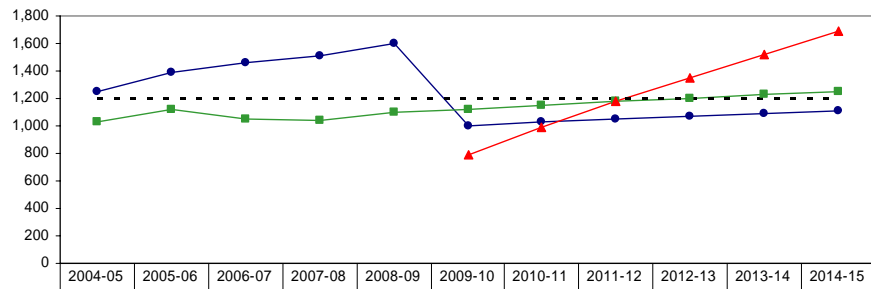
Cons

- Most of the potential JMMS walkers will be bussed to the new middle school

Albuquerque Public Schools NW Middle School Scenario 4



Scenario 4



| | 2004-05 | 2005-06 | 2006-07 | 2007-08 | 2008-09 | 2009-10 | 2010-11 | 2011-12 | 2012-13 | 2013-14 | 2014-15 |
|----------------|---------|---------|---------|---------|---------|---------|---------|---------|---------|---------|---------|
| —●— JM | 1,247 | 1,394 | 1,460 | 1,509 | 1,598 | 1,001 | 1,026 | 1,050 | 1,071 | 1,093 | 1,114 |
| —■— LBJ | 1,034 | 1,124 | 1,054 | 1,044 | 1,097 | 1,121 | 1,150 | 1,177 | 1,200 | 1,225 | 1,248 |
| —▲— New NWMS | | | | | | 791 | 993 | 1,184 | 1,348 | 1,523 | 1,686 |
| - - - Capacity | 1,200 | 1,200 | 1,200 | 1,200 | 1,200 | 1,200 | 1,200 | 1,200 | 1,200 | 1,200 | 1,200 |