
2007 Northwest Elementary School Boundary Committee

October 24, 2007

4:00 PM to 5:00 PM

Sierra Vista Elementary School



ALBUQUERQUE PUBLIC SCHOOLS

Capital Master Plan

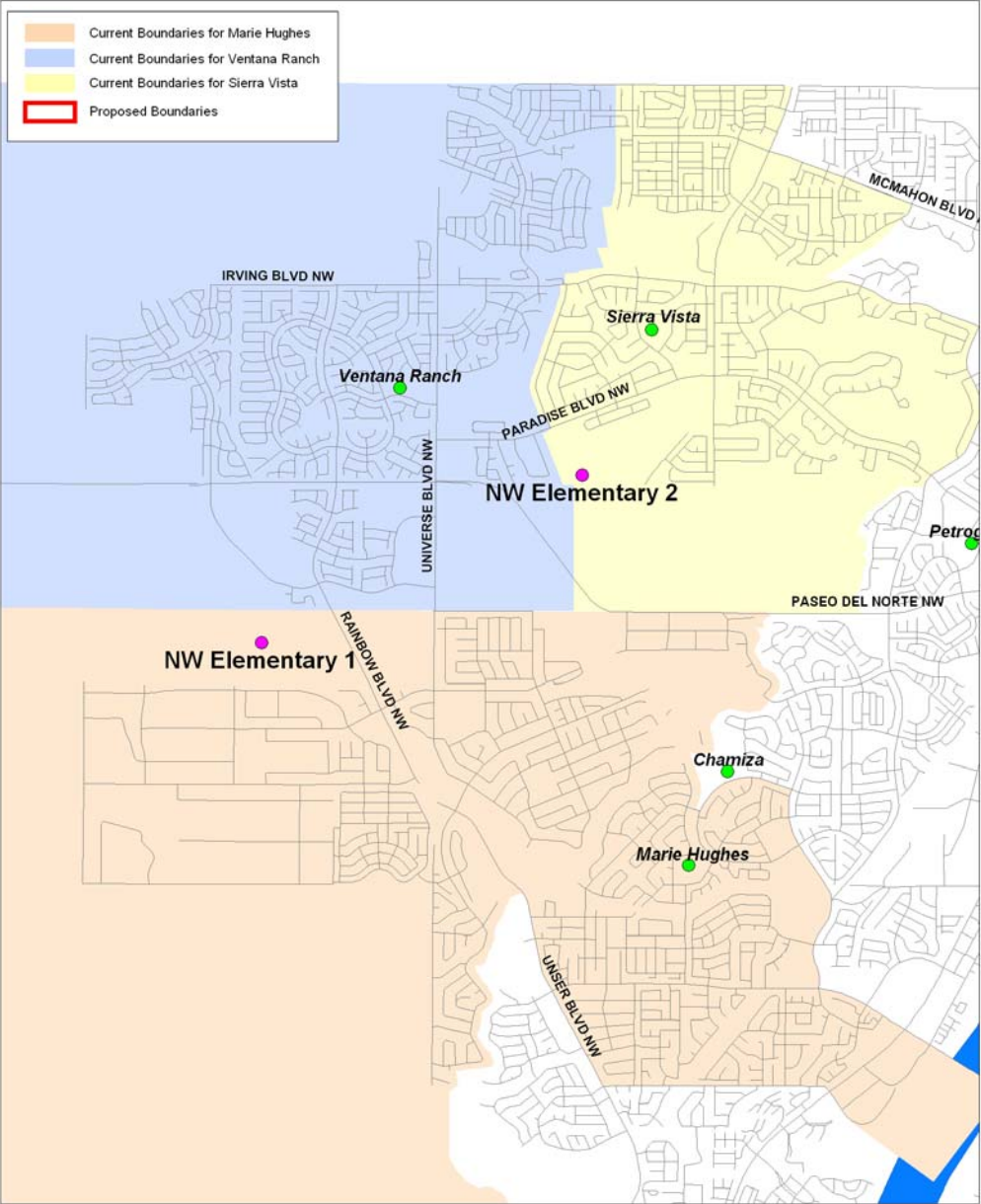
Expect Great Things!

Agenda

- Discuss feedback from public meetings
- Recommend boundaries for new elementary schools

CURRENT Northwest Elementary School Attendance Areas

Albuquerque Public Schools Current Elementary School Boundaries



PROPOSED Northwest Elementary School Attendance Areas

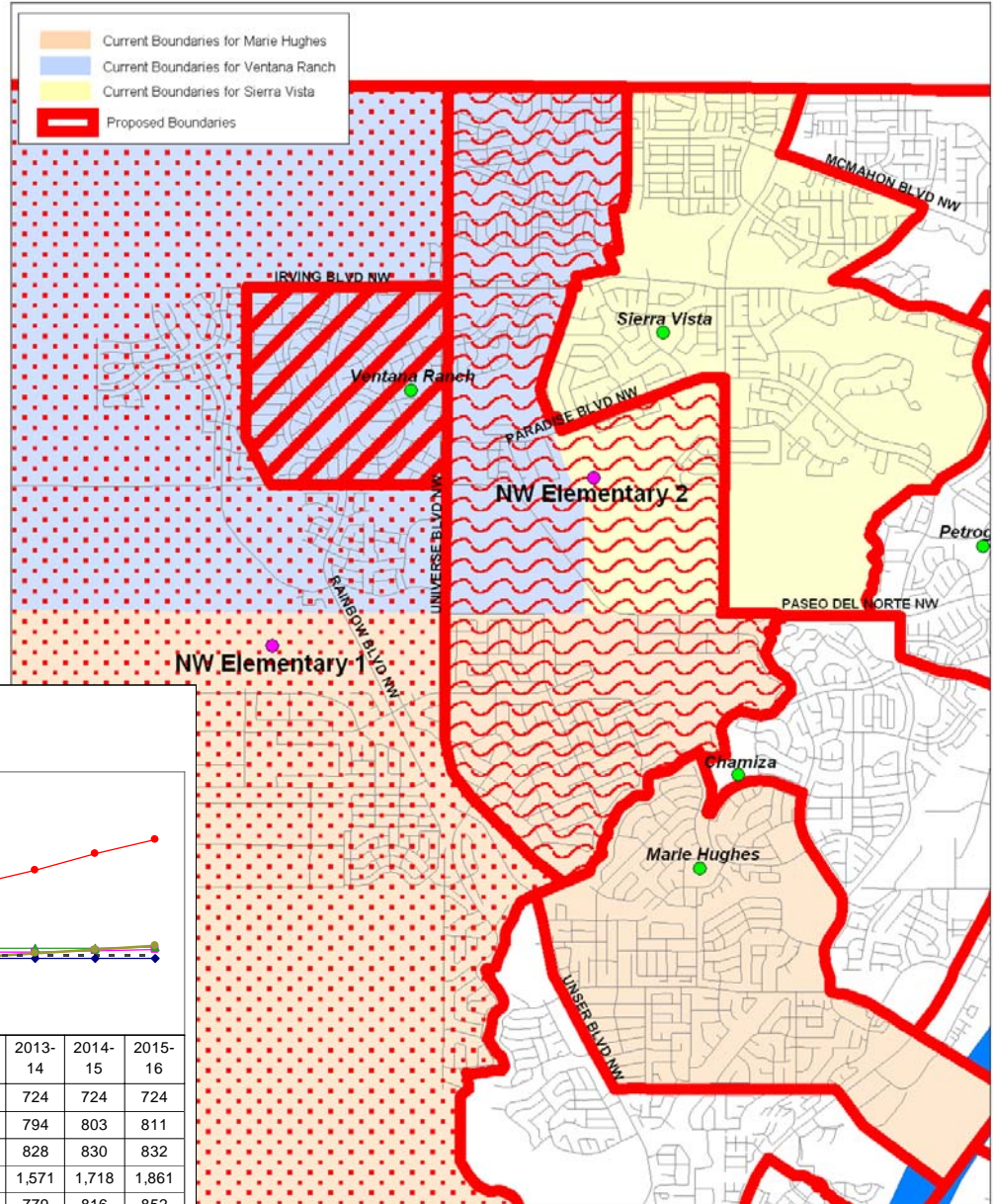
Pros

- Two new elementary schools to address overcrowding and growth
- Relief for VRES
- MHES and SVES have viable long term boundaries

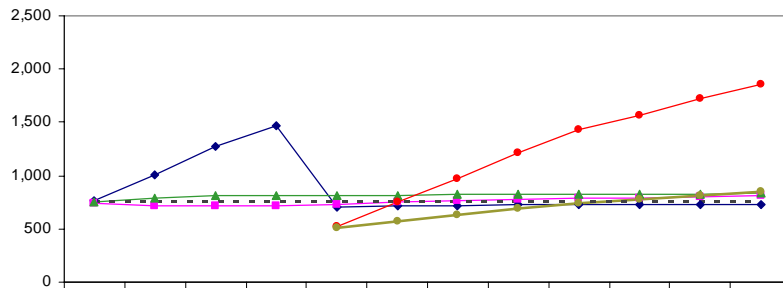
Cons

- NWES 1 reaches capacity by 2010

Albuquerque Public Schools Proposed Elementary School Boundaries



Proposed Scenario



	2004-05	2005-06	2006-07	2007-08	2008-09	2009-10	2010-11	2011-12	2012-13	2013-14	2014-15	2015-16
VRES	763	1,004	1,272	1,474	710	714	719	724	724	724	724	724
MHES	746	719	713	720	733	746	760	774	786	794	803	811
SVES	758	787	809	810	813	816	819	823	826	828	830	832
New NWES 1					520	750	975	1,214	1,430	1,571	1,718	1,861
New NWES 2					511	570	628	689	744	779	816	852
- - - "Design" Capacity	750	750	750	750	750	750	750	750	750	750	750	750

Summary of Public Input

Pure Feeders

- Pure feeders minimize disruptions to students.
- Seville subdivision is disrupted too often (proposed boundaries would assign the area to NWES 2, new middle school, and Cibola HS.
- Cantacielo feeds to NWES 1, new middle school and Cibola HS. Make area more of a pure feeder by assigning it to VVHS rather than Cibola. Area would stay in the education corridor for all levels.

Other Boundary Proposals

- Assign Cantabella to Ventana Ranch ES. Proposes a new boundary such that those north of VRE attends VRE and those south of VRE attends the new schools so that students are not bussed past an elementary school.
- Assign Seville to Sierra Vista since school is established and area was once assigned to Sierra Vista.

Other Comments

- Some students will be bussed to schools that are further away.
- Build permanent facilities where portables are currently located.
- Concerns about locating an elementary, middle and high schools too close to one another. Some concerns about a mid-year opening.

Timeline

- October 10th First public meeting (Wed, 7:00 – 8:30 pm, Ventana Ranch ES)
- October 16th Second public meeting (Tues, 7:00 – 8:30 pm, Ventana Ranch ES)
- October 24th Boundary Committee will reconvene to consider the public comments and to determine if any adjustments need to be made to the proposed option.
- October 25th Proposal to Superintendent Dr. Beth Everitt
- November 6th Superintendent presents recommendation to the Capital Outlay Committee of the Board
- November 7th* Full Board of Education for adoption
- Jan 2009 Two (2) new elementary schools open

*There will be additional opportunities for public comments directly to the Board of Education on November 7th

**Parents of students in the affected boundaries will be notified and the new boundaries will be effective Fall 2008.

***For more information, go to <http://construction.voteaps.com/BoundaryCommittees.html>